



Upper Lambricks | | Rayleigh | SS6 8BP

Guide Price £575,000

bear
Estate Agents

Guide Price £575,000 - £600,000

This four-bedroom detached house in Rayleigh offers a fantastic opportunity to create a wonderful family home, ideally positioned close to local amenities and Rayleigh Station. With a spacious interior that includes a dining area, utility space, and a convenient downstairs WC, the property provides excellent potential for comfortable living. The beautiful rear garden is perfect for outdoor enjoyment, while the addition of a garage and off-street parking enhances its practicality.

The property features well-proportioned living accommodation throughout, offering flexibility and ample space for modern family life. With plenty of scope to personalise and adapt to individual needs, it is well-suited to buyers looking to make a home their own in a desirable location.

This home represents an excellent opportunity for those seeking a property with strong potential in a well-connected area. With its generous layout, appealing features, and proximity to transport links and amenities, it is a must view

- Detached House
- Off Street Parking
- Close To Local Amenities And Schools
- Utility Room
- Four Bedrooms
- Garage With EV Charger Fitted
- Beautiful Rear Garden
- Downstairs WC

Hallway

Door with obscured window and window surround to front. Ceiling mounted light fitting, wall mounted radiator and wooden effect flooring throughout. Access to downstairs WC, kitchen and living area.

Downstairs WC

Ceiling mounted light fitting, obscured window to front, parts tiled walls, wash hand basin with storage beneath, low-level WC and tiled flooring.





Kitchen

12'3 x 8'8 (3.73m x 2.64m)
Ceiling mounted light fitting, double window to rear, splashback tiles and tiled flooring. Range of wall and floor mounted units including stainless steel sink and dryer unit, integrated double oven with separate induction hob and extractor fan overhead, integrated dishwasher, and integrated fridge. Access to utility room and dining area.

Utility Room

9'4 x 10'6 (2.84m x 3.20m)
Ceiling mounted light fitting, UPVC door with window surround to rear, tiled walls and tiled flooring. Wall and floor mounted units including stainless steel sink, a new boiler fitted October 2025 and dryer. Access to garage and rear garden.

Integrated Garage

9'6 x 17'3 (2.90m x 5.26m)
Ceiling mounted light fitting, electric roller door to front and concrete based flooring. Fitted with lighting and power throughout and EV charging points.

Dining Area

10'0 x 12'2 (3.05m x 3.71m)
Ceiling mounted light fitting, window to side, tilt and slide doors to rear garden, wall mounted radiator and carpeted throughout .

Living Area

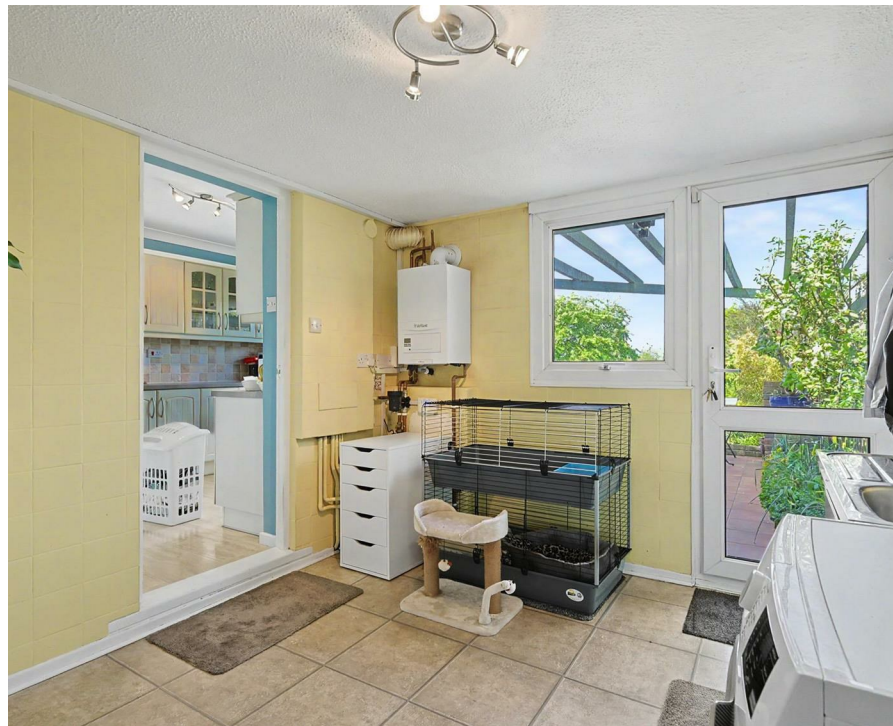
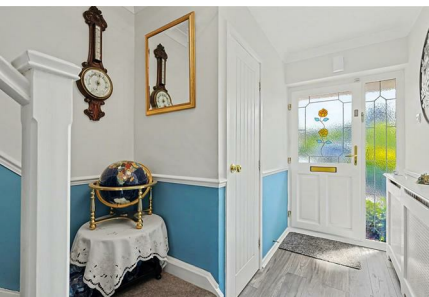
17'5 x 12'4 (5.31m x 3.76m)
Two ceiling mounted light fittings, window to side, bay window to front, wall mounted radiator and carpeted throughout.

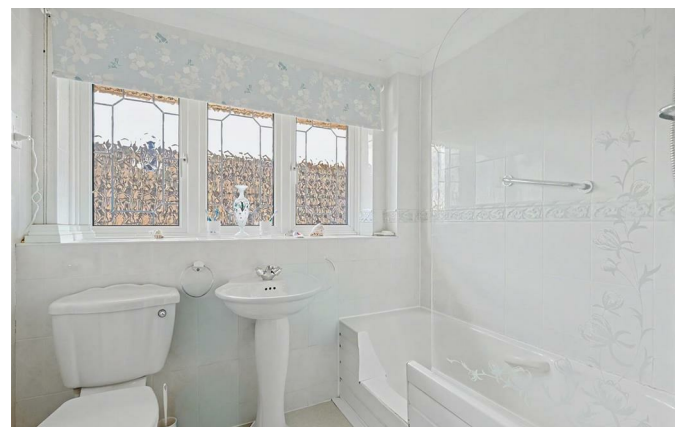
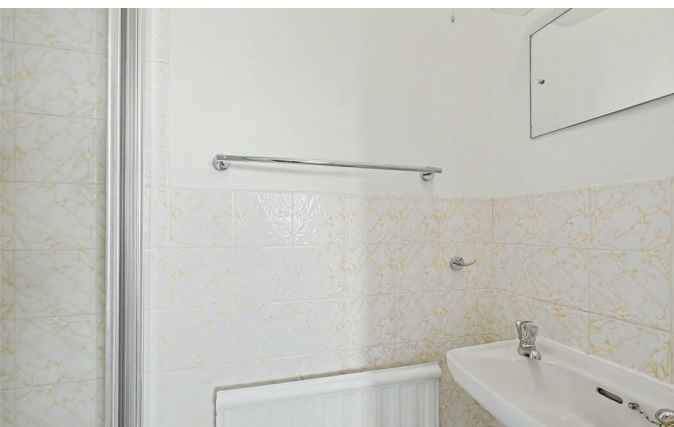
Landing

Ceiling mounted light fitting, double window to side, loft hatch and access to all bedrooms and bathroom.

Bedroom One

11'9 x 11'6 (3.58m x 3.51m)
Ceiling mounted light fitting, large double window to rear, wall mounted radiator, fitted storage and shelving and access to shower room.





Shower room

Ceiling mounted light fitting, wall mounted radiator, shower unit, wash hand basin, part tiled walls and vinyl flooring

Bedroom Two

10'9 x 11'10 (3.28m x 3.61m)

Ceiling mounted light fitting, double window to front, wall mounted radiator and carpeted throughout.

Bedroom Three

9'11 x 7'0 (3.02m x 2.13m)

Ceiling mounted light fitting, window windows to front, wall mounted radiator and carpeted throughout

Bedroom Four

8'5 x 6'11 (2.57m x 2.11m)

Ceiling mounted light fitting, window to rear, wall mounted radiator and carpeted throughout

Bathroom

118 x 7'1 (35.97m x 2.16m)

Ceiling Mant light fitting, obscured double window to side, built-in storage cupboard, wall mounted radiator, bath unit with shower overhead, wash hand basin, low-level WC, tiled walls and vinyl flooring.

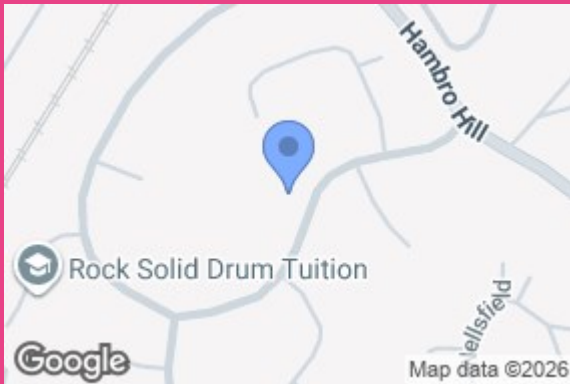
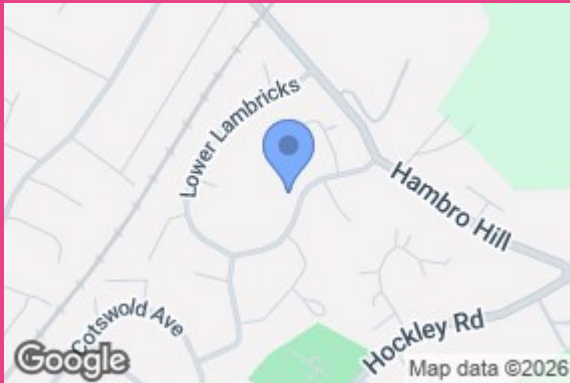
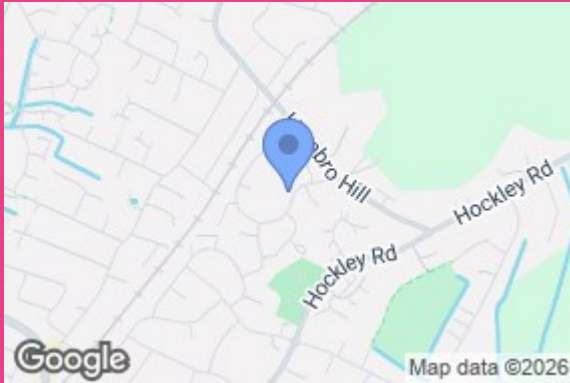
Rear Garden

Accessed via sliding doors in dining area, door in utility room and sideway. Raised patio area with wooden pergola and built-in pond then leads down to lower level of garden. Patio pathway leads to rear with remainder laid to lawn. Mature shrubs and plants in plant borders to side, with wooden Summer house, greenhouse and wooden sitting area to rear.

Frontage

Block paved driveway for multiple vehicles to front. Partially bordered with slate and shingle plant borders.

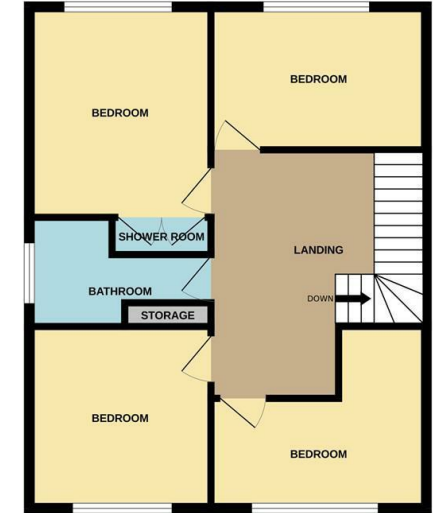




GROUND FLOOR



1ST FLOOR



Whilst every attempt has been made to ensure the accuracy of the floorplan contained here, measurements of doors, windows, rooms and any other items are approximate and no responsibility is taken for any error, omission or mis-statement. This plan is for illustrative purposes only and should be used as such by any prospective purchaser. The services, systems and appliances shown have not been tested and no guarantee as to their operability or efficiency can be given.
Made with Metropix ©2025

Energy Efficiency Rating		Current	Potential
Very energy efficient - lower running costs			
(92 plus) A			
(81-91) B			
(69-80) C			
(55-68) D			
(39-54) E			
(21-38) F			
(1-20) G			
Not energy efficient - higher running costs			
England & Wales		EU Directive 2002/91/EC	

11 Main Road
Hockley
Essex
SS5 4QY
01702 416476
hockley@bearestateagents.co.uk
<https://www.bearestateagents.co.uk>